



**RELAF**  
Por el derecho a vivir  
en familia y comunidad

**“Child and Youth Care in a Developing World - Global Perspective”.**

**What is working in Latin America and that can be borrowed in a global perspective.**

**Matilde Luna, Director of RELAF**

**FICE International Federal Council (CF) and Conference.  
Kenya | March 2017.**





## What is RELAF ?



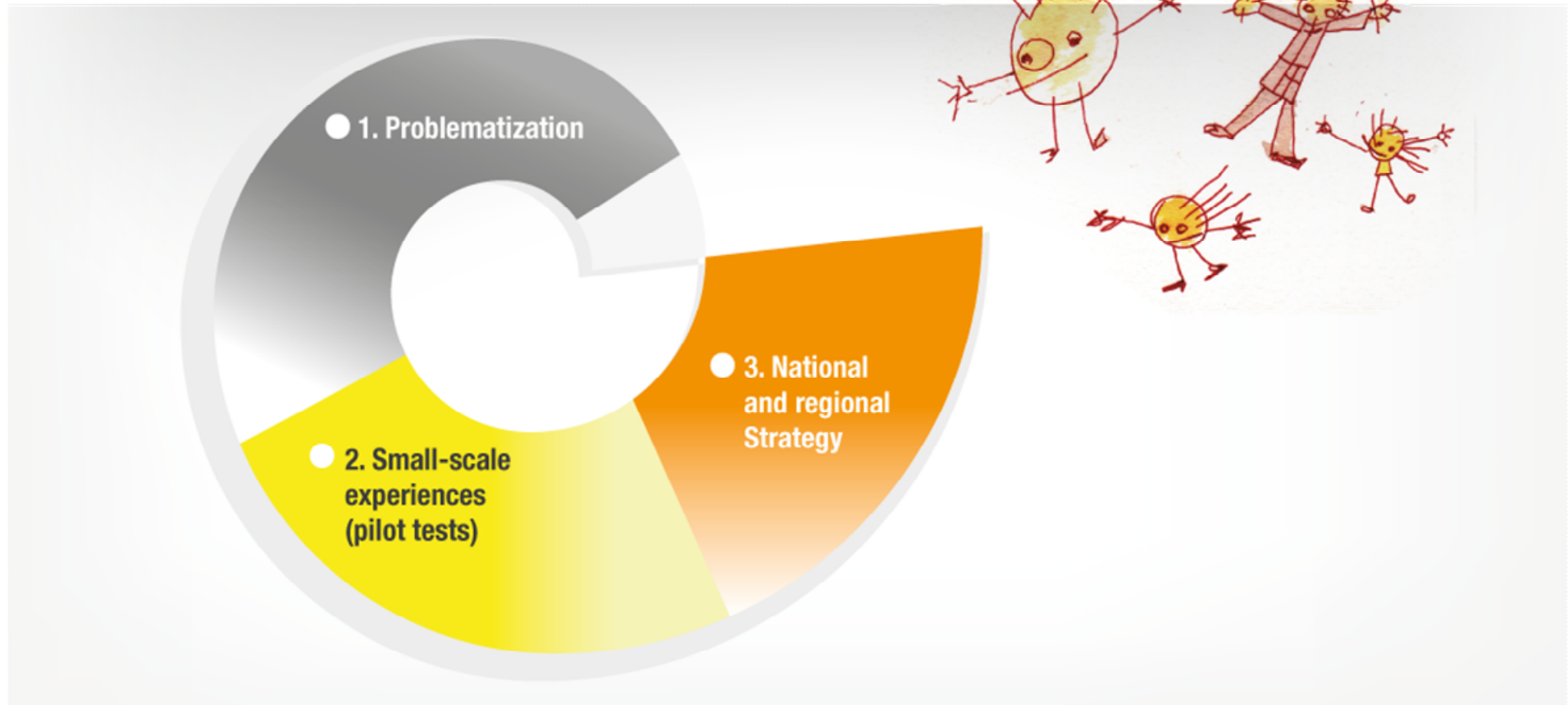
} **RELAF** promotes and supports all efforts by governments and NGOs aimed at fulfilling the right to family life of every child and adolescent.

} **240,000** of the **8 million** children currently living in orphanages around the world are from Latin America and the Caribbean. Being deprived of the care and protection that only a family can show them, they are more susceptible to the violation of their rights. This is the reason why we work towards the deinstitutionalisation of child care, the promotion of foster care, as well as the prevention of separation of children and adolescents from their families and communities.

} All of our actions seek to influence authorities and policy makers' decisions when it comes to improving the lives of children and adolescents, their families and communities, by pursuing the construction of a comprehensive protection system.



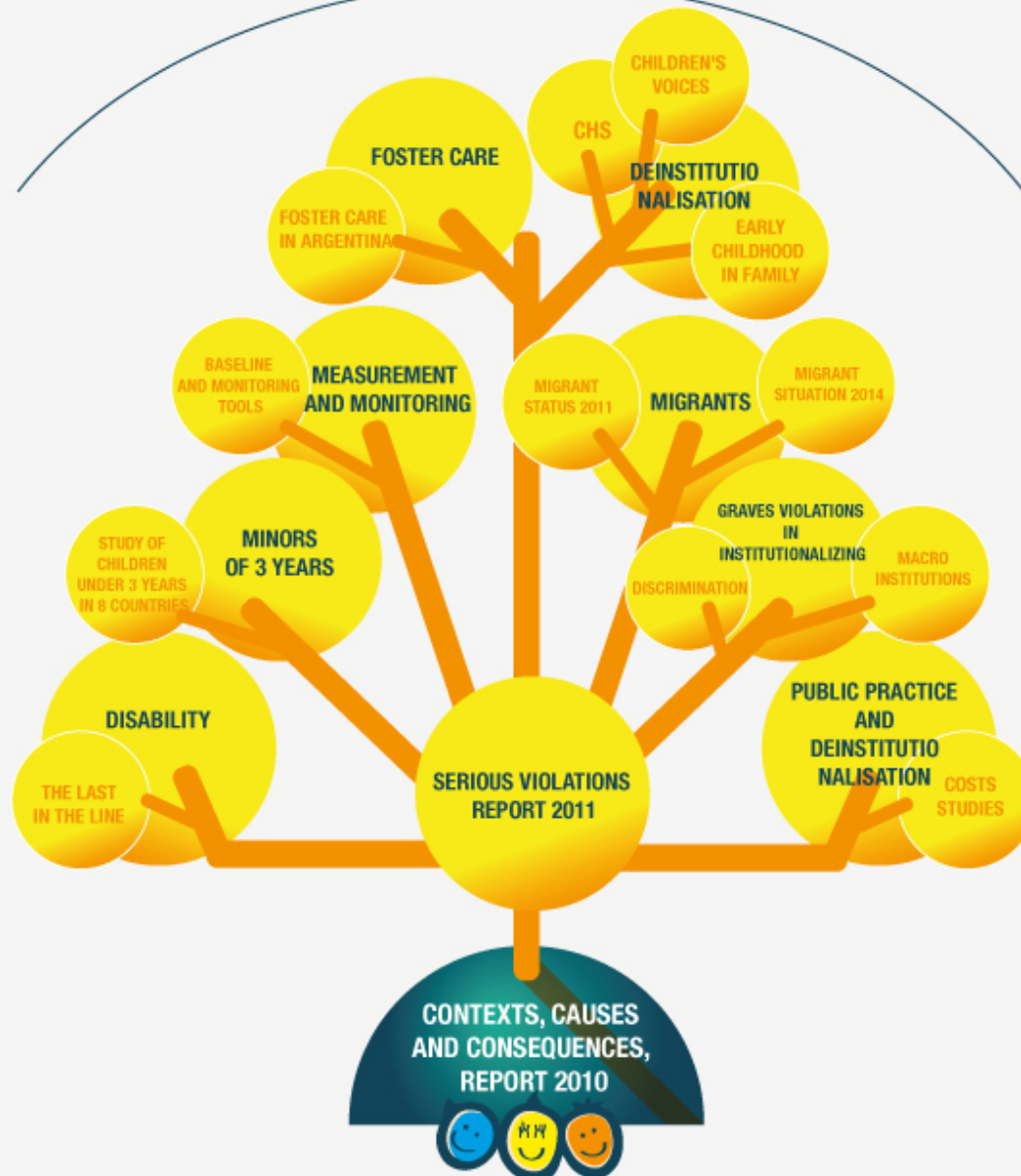
## RELAF Method: Create the conditions for the transformation





# KNOWLEDGE TREE

COMPREHENSIVE PROTECTION SYSTEM: CASE STUDY OF SANTA FE





## KNOWLEDGE EXAMPLES



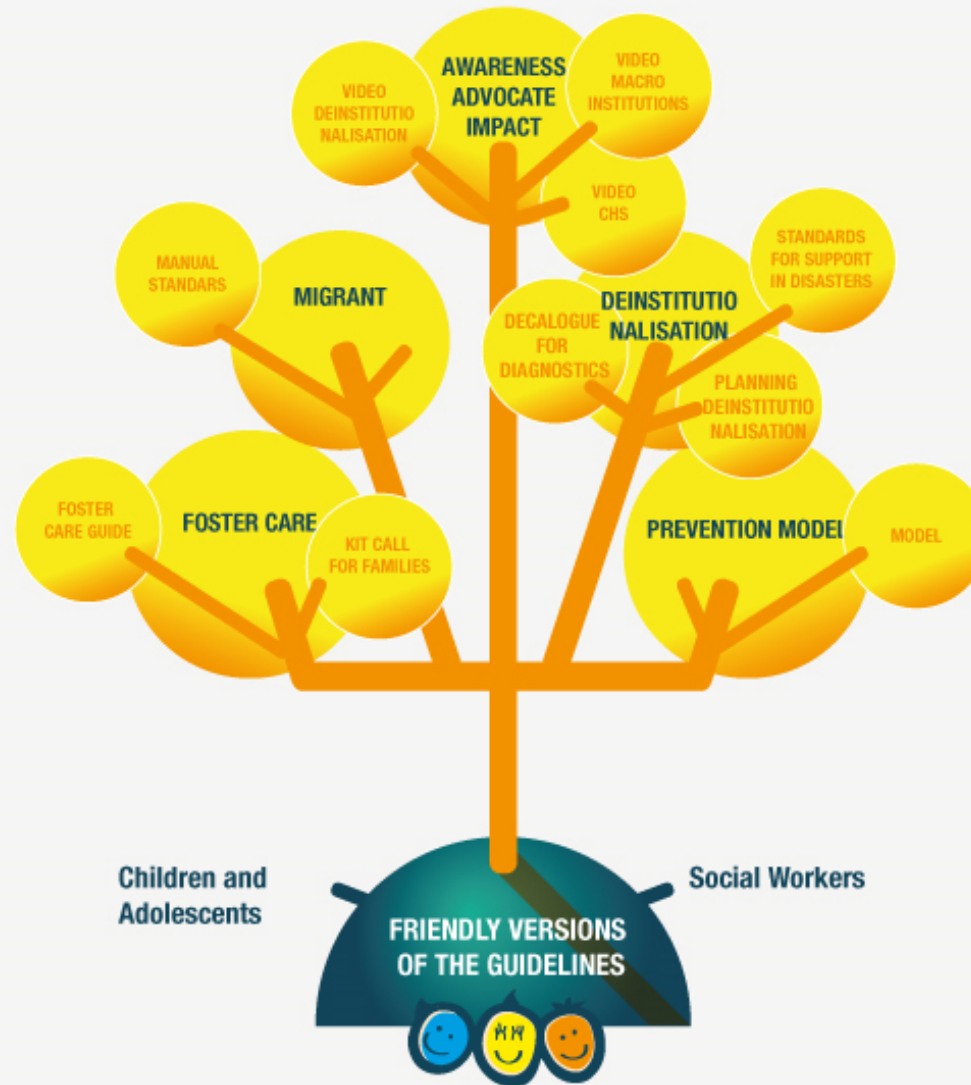
The report aims at making people aware about the resilience of the institutionalisation mechanism in macro-institutions in the region, as well as urging countries to adapting subsystems for the protection of children deprived of parental care by implementing appropriate alternative care mechanisms, in line with international human rights standards.



This report presents the results of a review on the situation of children and adolescents with disabilities living in institutions in Latin America and the Caribbean. This is a regional report and it introduces three case studies: Costa Rica, Jamaica, and Uruguay.



# TOOL TREE





## TOOL EXAMPLES



Tool built to assess the situation of children in alternative formal care, with a special focus on institutional care, collect data and develop indicators to measure and monitor the process of deinstitutionalisation. Emphasis: Emphasis on children under 3 years and on macro-institutions.



Tools for the implementation of the UN Guidelines for the Alternative Care of Children: A guide to professionals and operators who work in alternative care institutions and support family programs. Another targeted at children and adolescents.

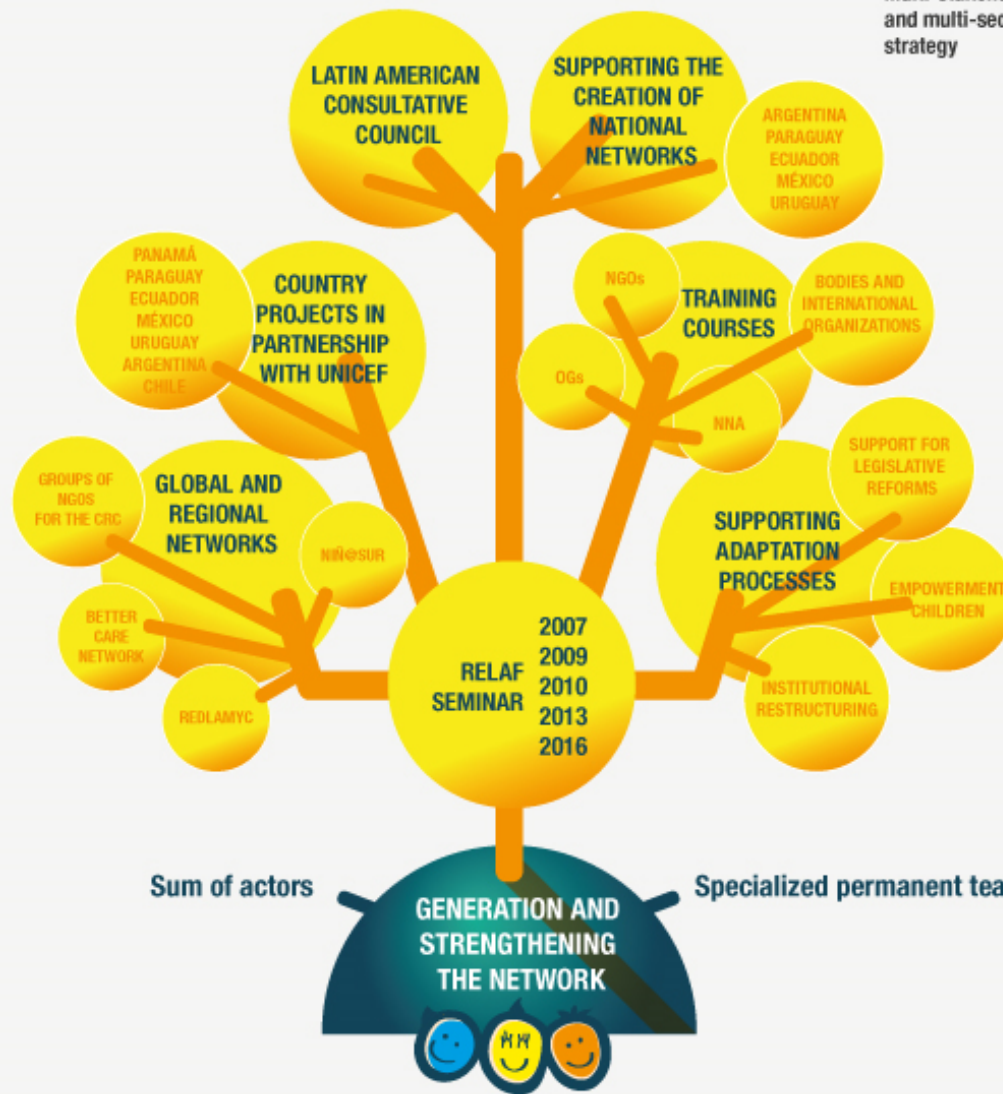


Model focused on strengthening the responsibility for the care of girls and young children: family, extended family, community, service professionals, and public policy makers. It focuses on early care protection, abandonment, separation, and unnecessary institutionalisation of young children. Document accompanied by an intervention framework in which action guidelines are proposed for operators and professionals.



# ACTION TREE

Multidimensional,  
Multi-stakeholder  
and multi-sectoral  
strategy







# EXPERIENCES

## MEXICO

(Alternative care experiences)

Partners: UNICEF México; Procuraduría Federal; Procuraduría de Ciudad de México; Procuraduría de Tabasco; Procuraduría Campeche; Procuraduría Chihuahua; Procuraduría Morelos.

### ACTIONS:

- Development of 3 alternative care pilot program (Procuraduría Federal; Procuraduría de Ciudad de México; Procuraduría de Tabasco)
- Technical support for alternative care programs (Procuraduría Campeche; Procuraduría Chihuahua; Procuraduría Morelos)

## PANAMA

(Deinstitutionalisation experiences)

Partners: UNICEF Panamá; SENNIAF; MIDES; Hogar Malambo; Ciudad del Niño; Aldeas SOS.

### ACTIONS:

- DI Pilot test in Casa Hogar Soná: procedure guidelines as a result of the experience, with national projection.
- 3 study case of DI and institutional reconversion of the panamanian civil society

## ARGENTINA

(Prevention experiences)

Partners: UNICEF Argentina; COPNAF.

### ACTIONS:

- Creation, training and support for the implementation of an Action Protocol for the prevention of abandonment and institutionalisation of young children



## CEN | SPECIFIC INITIAL OBJECTIVES:



} Train operators who work at child care institutions, particularly those providing alternative care to children

} Provide practical knowledge based on the most innovative regional experiences.

} Monitor and support the continuous training of all operators involved in the deinstitutionalisation processes.





## WHO ARE OUR ALLIES AND PARTNERS?

### ALLIES



We formed the Steering Group of:  
Better Care Network

RELAF is part of the following  
global networks:  
Better Volunteering Better  
Care, Child Rights Connect



### STRATEGIC PROJECT PARTNERS





## CHALLENGES

**1**



**Make a quantitative jump: Move from affecting restricted environments (Childhood areas of Governments and NGOs) to influencing all the public policy making structure and society.**

**2**



**Larger scale result: Move from small pilot projects to programs with a much greater of families and children involved.**

**3**



**Make human resources valuable, motivate on the persistence of the task through an ethical position and with the proper knowledge.**





**Thank you!**

**relaf.org**

 **REDRELAF**

 **RELAF\_ONG**

